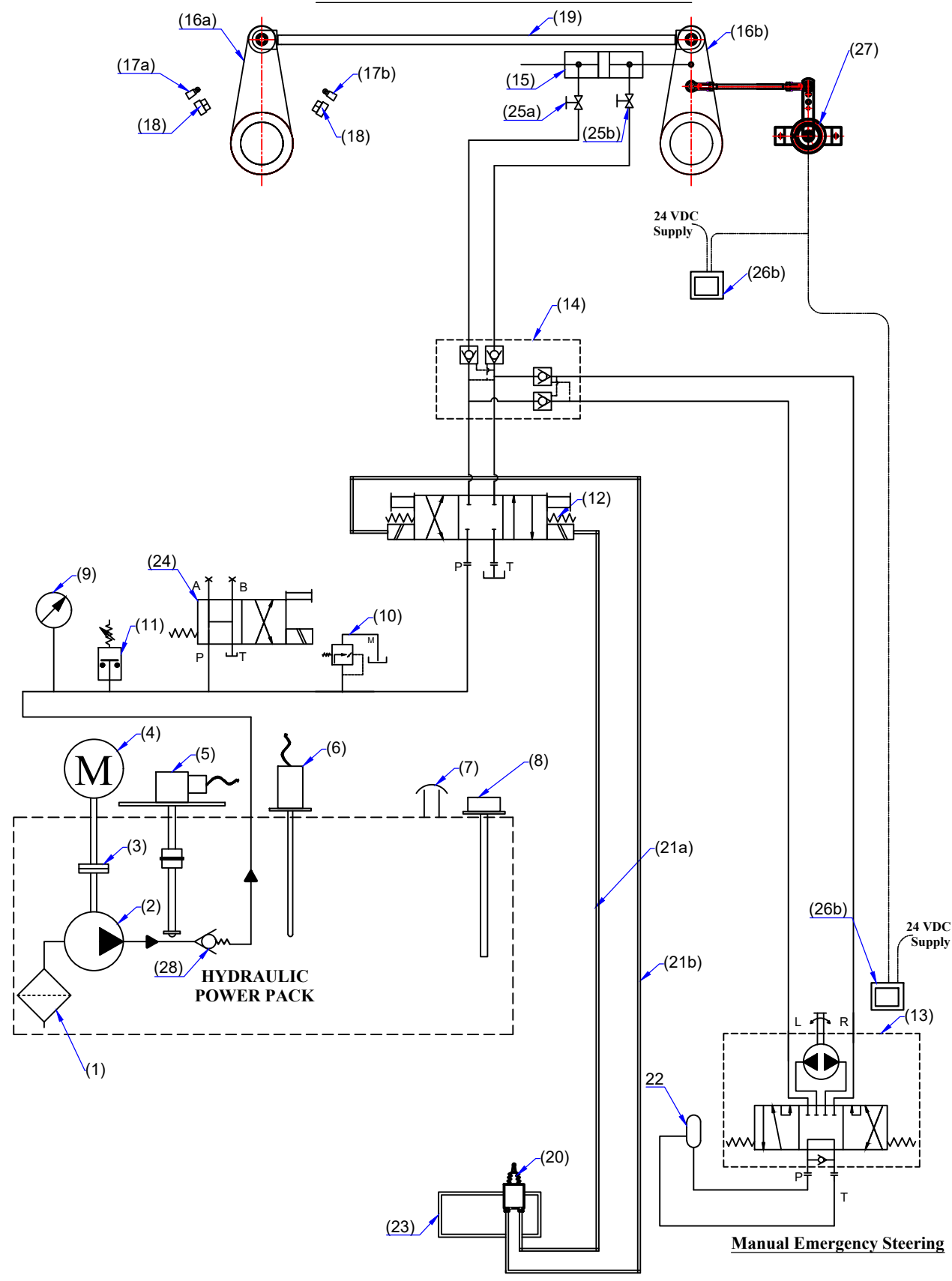



# Electro-Hyd. Circuit - HERCULES With Mechanical connection Rod.



	<b>MAC ♦ N ♦ HOM SYSTEMS</b> <b>KOCHI - 20</b>	<b>DESIGNATION</b> Electro-Hyd. Circuit - HERCULES With Mechanical connection Rod.	<b>DWG. No.</b> MHS-1882 (Page 1 of 2)	<b>DATE</b> 16.02.2024
A	B	C	D	E

## ELECTRO-HYDRAULIC CIRCUIT SYSTEM PARAMETERS

**1) Pump Capacity:**

**Discharge : 3 lpm**

**Max. Pressure : 200 kg/cm<sup>2</sup>**

**2) Hydraulic Cylinder**

**Operating Pressure : 70 kg/cm<sup>2</sup>**

**Relief Valve Set Pressure : 87.5 kg/cm<sup>2</sup>**

**3) Helm Steering Wheel**

**Diameter : 686 mm ( 27")**

**4) Seamless Steel Tube**

**Material : Carbon Steel,  
Cold Drawn, Normalised &  
Pickled Tube**

**Specification : EN 10305-4**

**Diameter : 16 mm**

**Thickness : 2 mm**

**5) Hydraulic Cylinder**

**Model : HERCULES**

**Stroke : 260 mm**

**Ram : 40 mm**

**6) Hydraulic Hose:**

**Grade : R1**

**I.D :  $\frac{1}{2}$ "**

**7) Electric Motor**

**1 HP, 50 Hz, 1440 rpm, 3Phase**

**8) Emergency Helm Pump**

**Discharge : 80 cc/rev**

Sl No.	Description
1.	Suction Strainer
2	Hydraulic Pump
3	Flexible Coupling
4	Electric Motor
5	Oil Level Sensor
6	Oil Temp. Sensor
7	Filler Breather
8	Dip Stick
9	Pressure Gauge
10	Pr.Relief Valve
11	Pre.Switch.Low Pre.Alam
12	Sol.Ope.Directiona Valve
13	Emergency Manual Pump
14	Pilot Operated Double Check Valve
15	Hyd. Actuator - HERCULES
16a,16b	Tiller Arm (Yard Supply)
17a,17b	Limit Switch
18	Mechanical Stopper ( Yard Supply )
19	Connection Rod ( Yard Supply )
20	Joy Stick
21a,21b	Ele.Line to Sol.Ope.Valve
22	Reservoir
23	Steering Gear Control Panel
24	Unloading Valve
25a,25b	Isolation Valve
26a,26b	Rudder Angle Indicator
27	Rudder Angle Sensor
28	Non-Return Valve



**MAC ♦ N ♦ HOM SYSTEMS  
KOCHI - 20**

**DESIGNATION**

Electro-Hyd. Circuit - HERCULES With  
Mechanical connection Rod.

**DWG. No.**

MHS-1882  
(Page 2 of 2)

**DATE**

16.02.2024

A

B

C

D

E

F

G

H